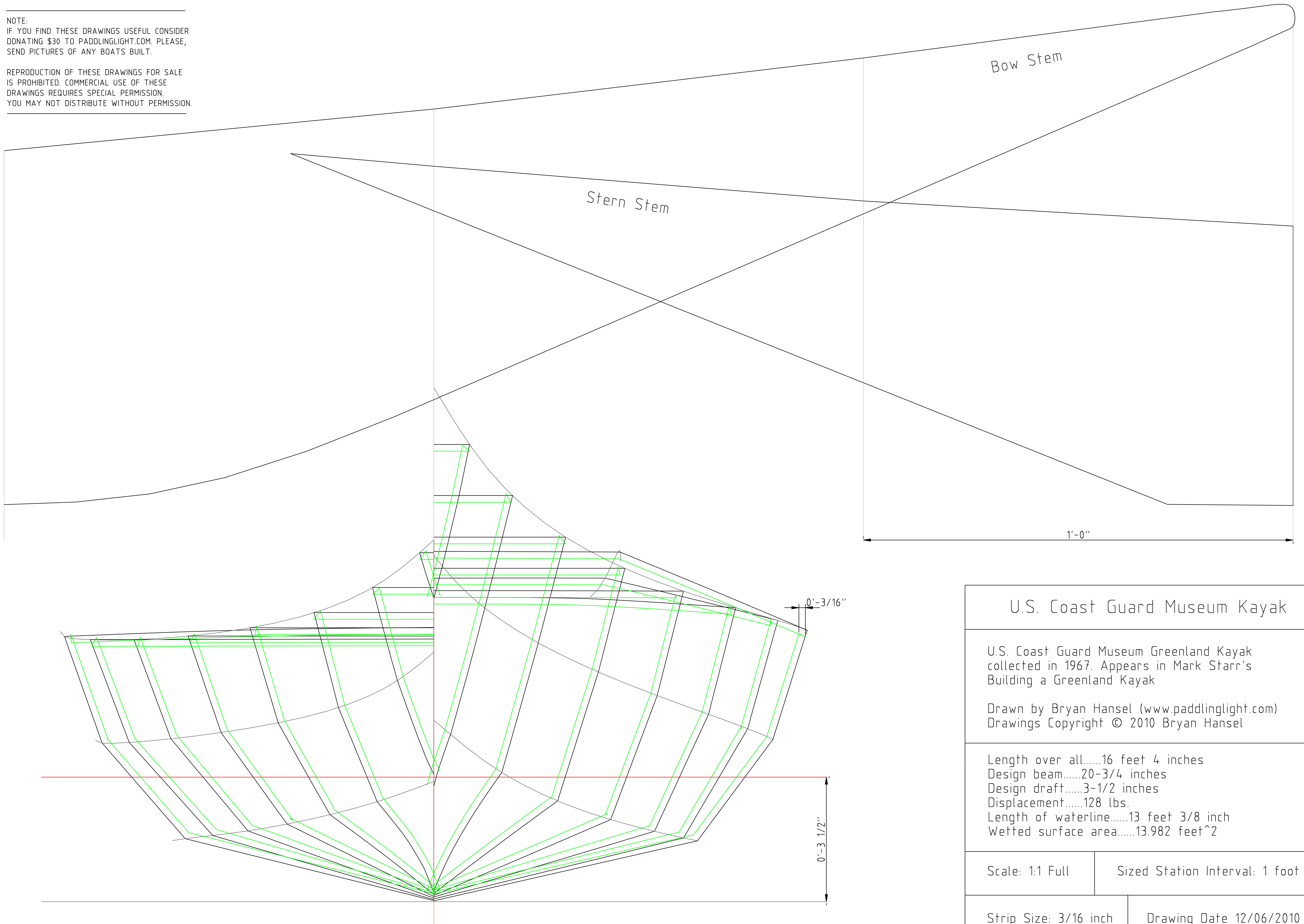


NOTE:
 IF YOU FIND THESE DRAWINGS USEFUL CONSIDER
 DONATING \$30 TO PADDLINGLIGHT.COM. PLEASE,
 SEND PICTURES OF ANY BOATS BUILT.

REPRODUCTION OF THESE DRAWINGS FOR SALE
 IS PROHIBITED. COMMERCIAL USE OF THESE
 DRAWINGS REQUIRES SPECIAL PERMISSION.
 YOU MAY NOT DISTRIBUTE WITHOUT PERMISSION.



U.S. Coast Guard Museum Kayak

U.S. Coast Guard Museum Greenland Kayak
 collected in 1967. Appears in Mark Starr's
 Building a Greenland Kayak

Drawn by Bryan Hansel (www.paddlinglight.com)
 Drawings Copyright © 2010 Bryan Hansel

Length over all.....16 feet 4 inches
 Design beam.....20-3/4 inches
 Design draft.....3-1/2 inches
 Displacement.....128 lbs.
 Length of waterline.....13 feet 3/8 inch
 Wetted surface area.....13.982 feet²

Scale: 1:1 Full	Sized Station Interval: 1 foot
-----------------	--------------------------------

Strip Size: 3/16 inch	Drawing Date 12/06/2010
-----------------------	-------------------------