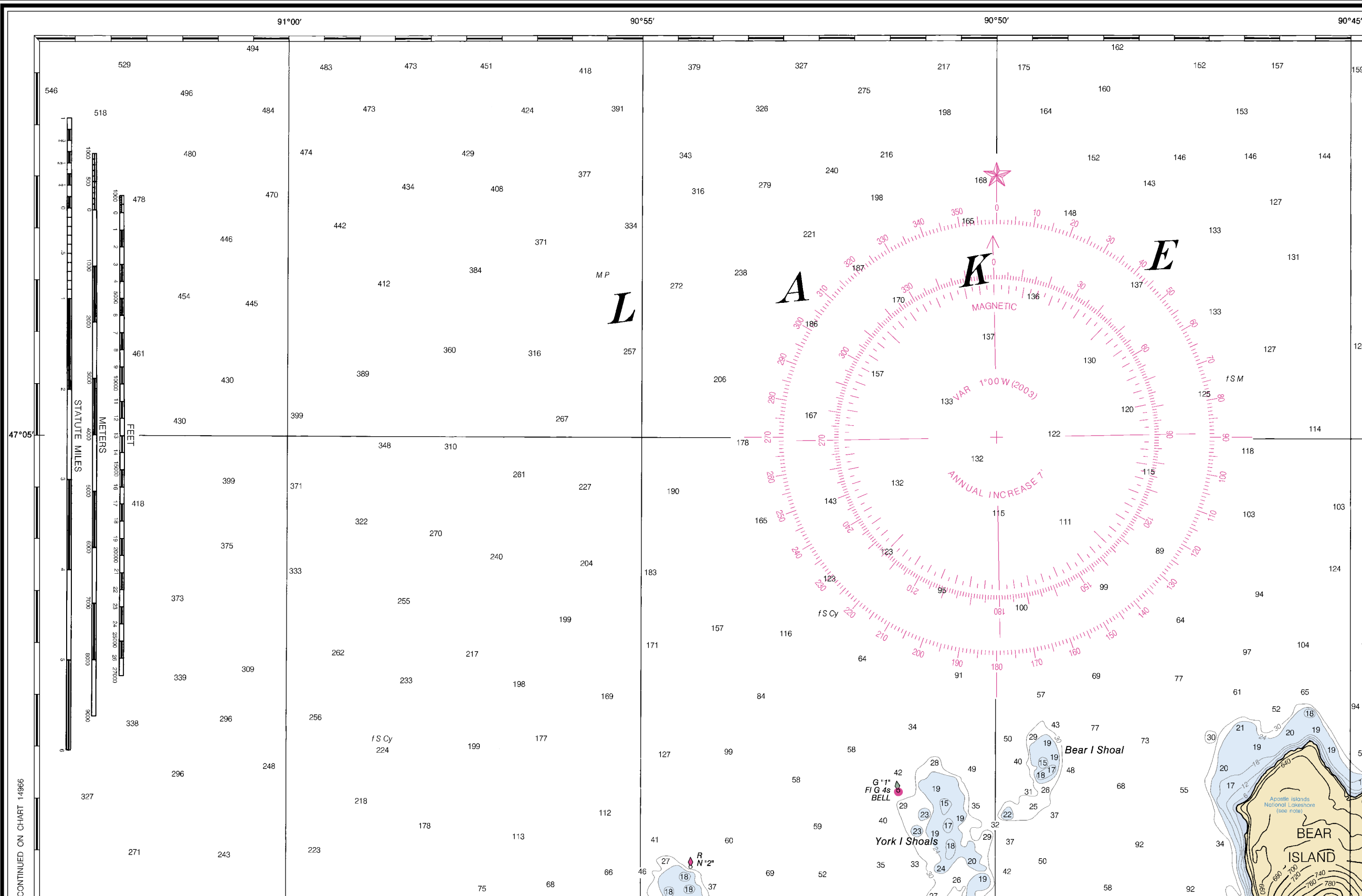
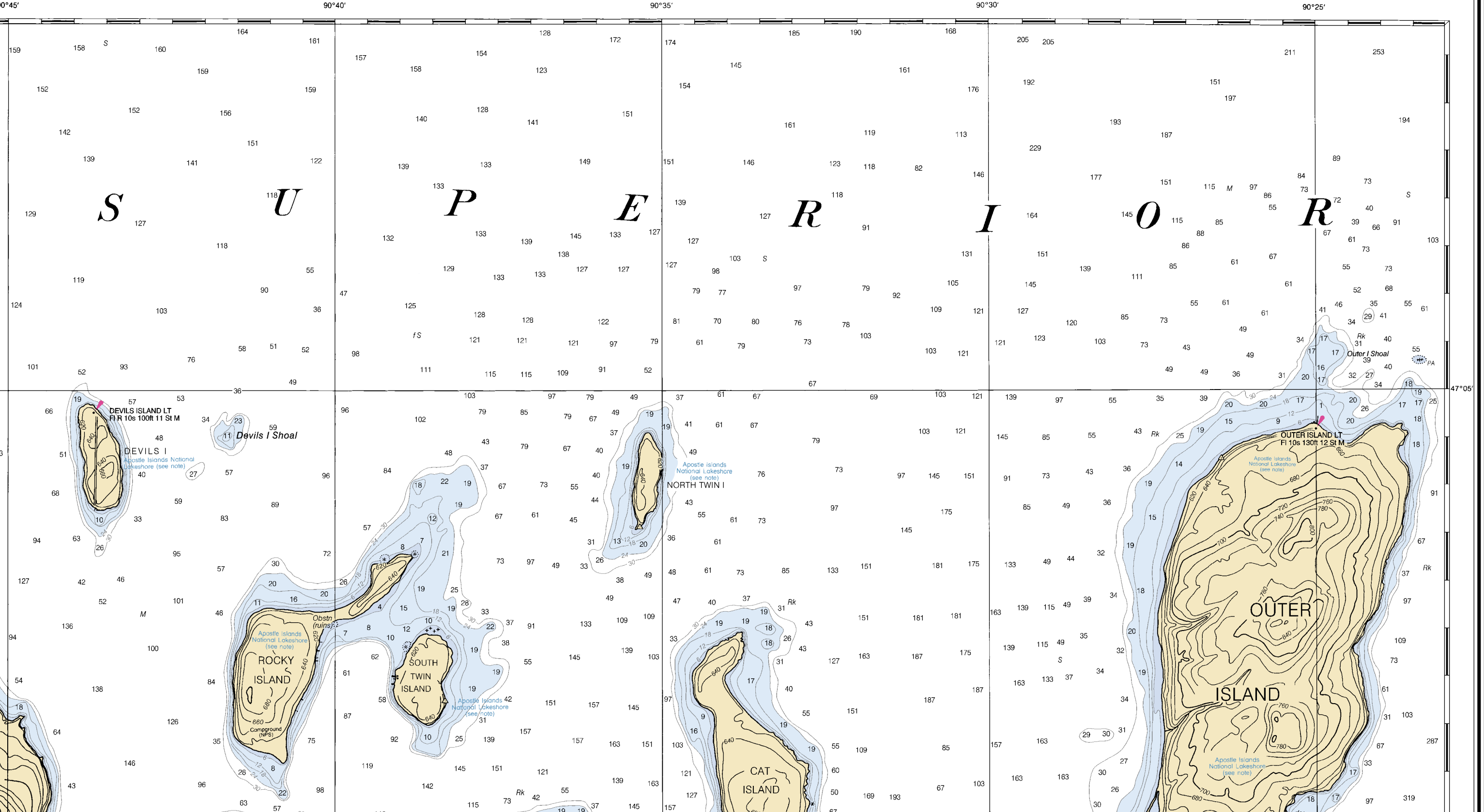


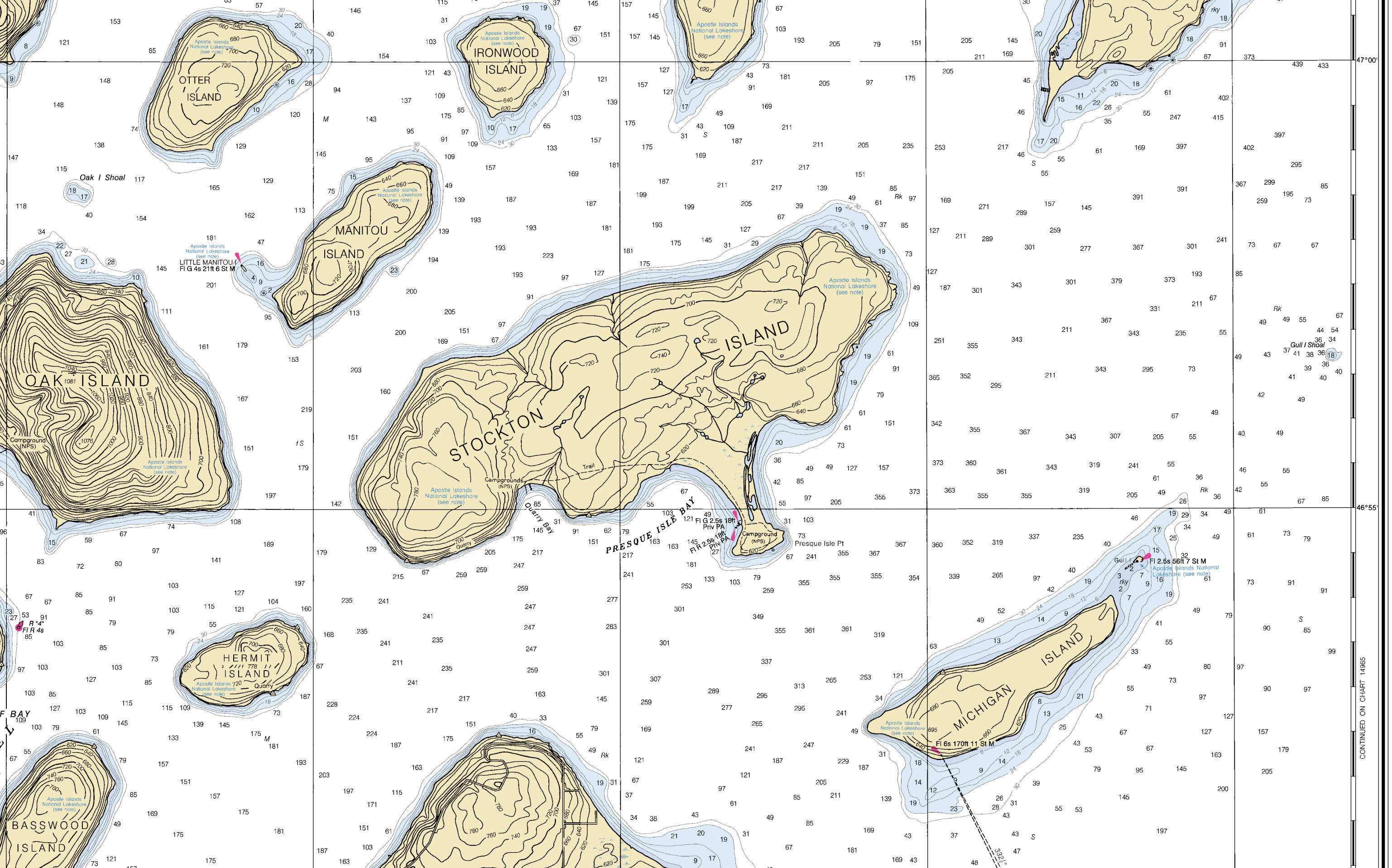
This nautical chart has been designed to promote safe navigation. The National Ocean Service encourages users to submit corrections, additions, or comments for improving this chart to the Chief, Marine Chart Division (N/CS2), National Ocean Service, NOAA, Silver Spring, Maryland 20910-3282.

PRINT-ON-DEMAND CHARTS
NOAA and its partner, OceanGrafix, offer this chart updated weekly by NOAA for Notices to Mariners and critical corrections. Charts are printed when ordered using Print-on-Demand technology. New Editions are available 5-8 weeks before their release as traditional NOAA charts. Ask your chart agent about Print-on-Demand charts or contact NOAA at 1-800-584-4683, <http://NauticalCharts.gov>, help@NauticalCharts.gov, or OceanGrafix at 1-877-56CHART, <http://OceanGrafix.com>, or help@OceanGrafix.com.

14973







Apostle Islands National Lakeshore (see note)
Little Manitowish Is. 4s 21ft 6 St M

Presque Isle Bay
Presque Isle Pt
Campground (NFS)
FI 2.5s 18ft
FI 2.5s 18ft
FI 2.5s 18ft

Apostle Islands National Lakeshore (see note)
Gull Shoal
FI 2.5s 56ft 7 St M

Apostle Islands National Lakeshore (see note)
Michigan Island
FI 6s 170ft 11 St M

CONTINUED ON CHART 14965

NOTES

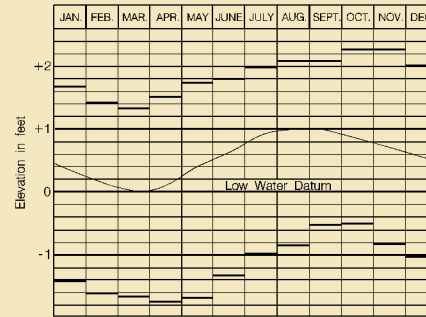
PLANE OF REFERENCE OF THIS CHART (Low Water Datum) 601.1 ft. Referred to mean water level at Rimouski, Quebec, International Great Lakes Datum (1985).
 SAILING DIRECTIONS. Bearings of sailing courses are true and distances given thereon are in statute miles between points of departure.
 AIDS TO NAVIGATION. Consult U.S. Coast Guard Light List for supplemental information concerning aids to navigation.
 SYMBOLS AND ABBREVIATIONS. For complete list of symbols and abbreviations see Chart No. 1.
 BRIDGE AND OVERHEAD CABLE CLEARANCES. When the water surface is above Low Water Datum, bridge and overhead clearances are reduced correspondingly. for clearances see U.S. Coast Pilot 6.
 AUTHORITIES. Hydrography and topography by the National Ocean Service, Coast Survey with additional data from the Corps of Engineers, Geological Survey, and U.S. Coast Guard.

CAUTION

Due to periodic high water conditions in the Great Lakes, some features charted as visible at Low Water Datum may be submerged, particularly in the near shore areas. Mariners should proceed with caution.

Sailing courses and limits indicated in magenta are recommended by the Lake Carriers Association and the Canadian Shipowners Association.

LAKE SUPERIOR



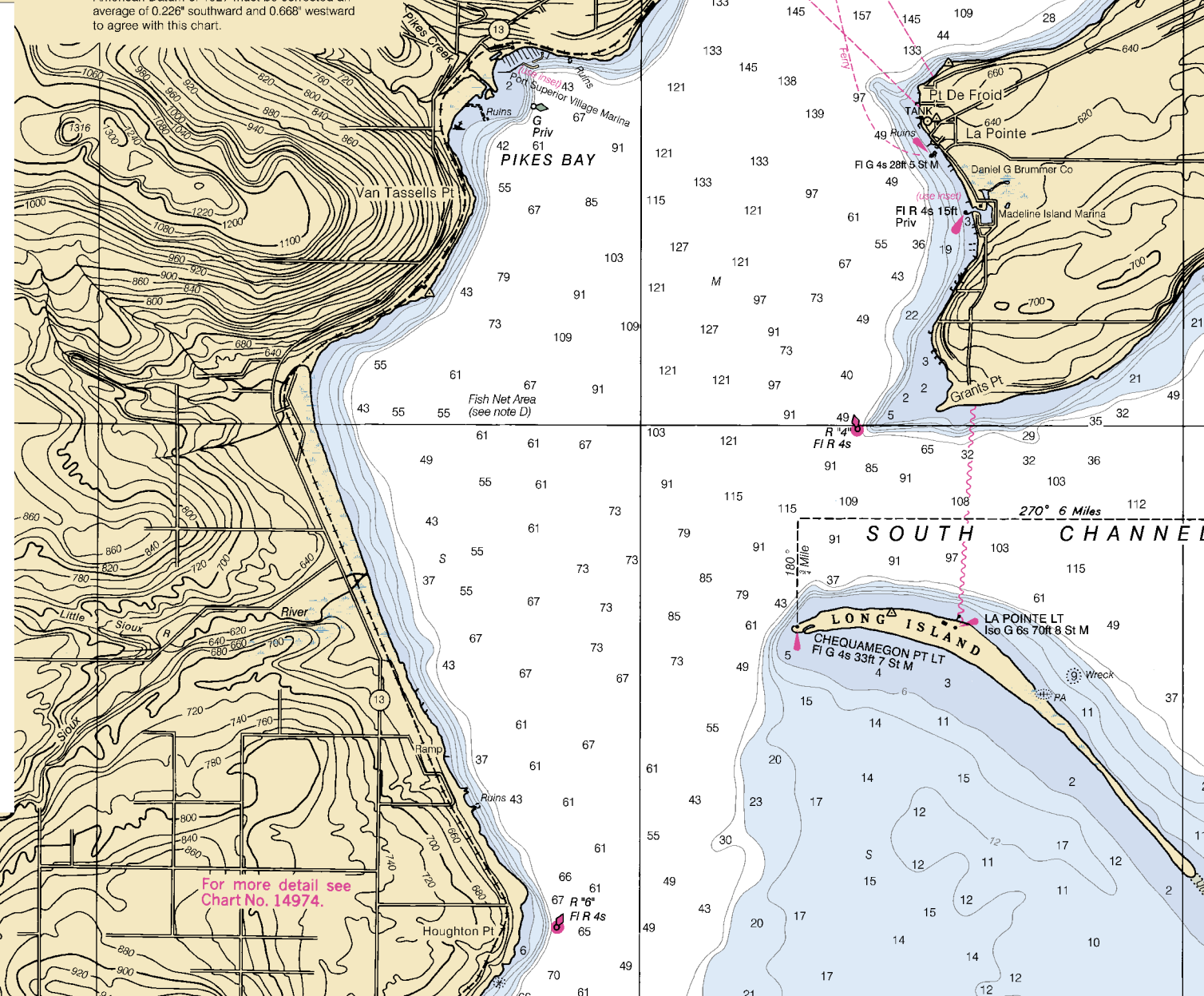
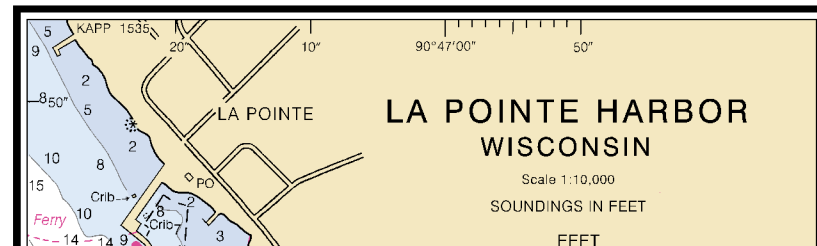
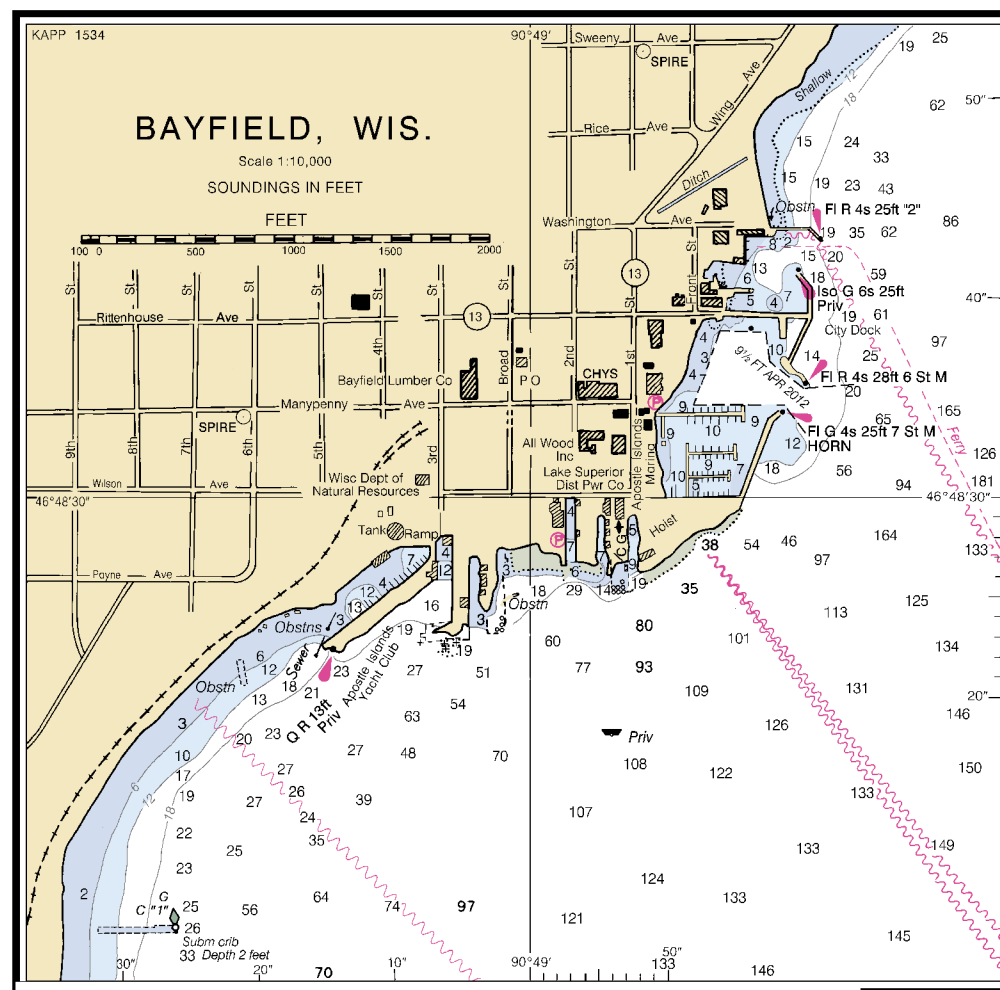
Low Water Datum, which is the plane of reference for the levels shown on the above hydrograph, is also the plane of reference for the charted depths. If the lake level is above or below Low Water Datum, the existing depths are correspondingly greater or lesser than the charted depths.

HORIZONTAL DATUM

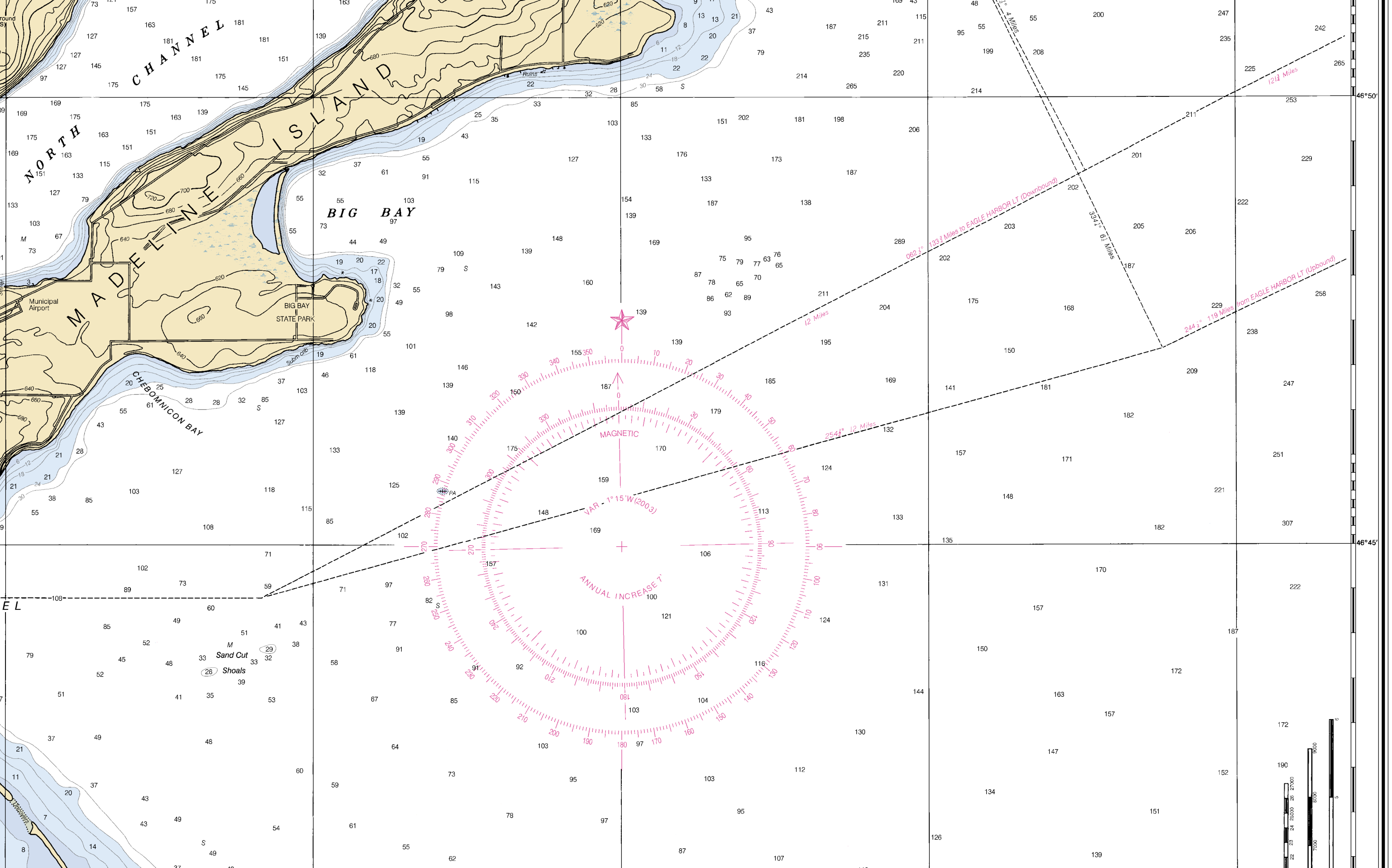
The horizontal reference datum of this chart is North American Datum of 1983 (NAD 83), which for charting purposes is considered equivalent to the World Geodetic System 1984 (WGS 84). Geographic positions referred to the North American Datum of 1927 must be corrected an average of 0.226" southward and 0.668" westward to agree with this chart.

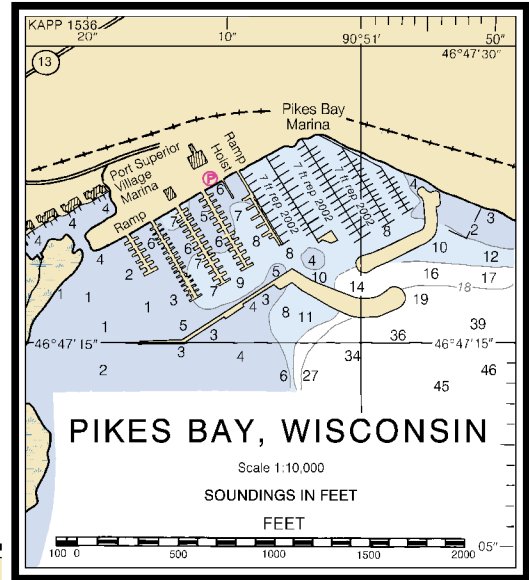
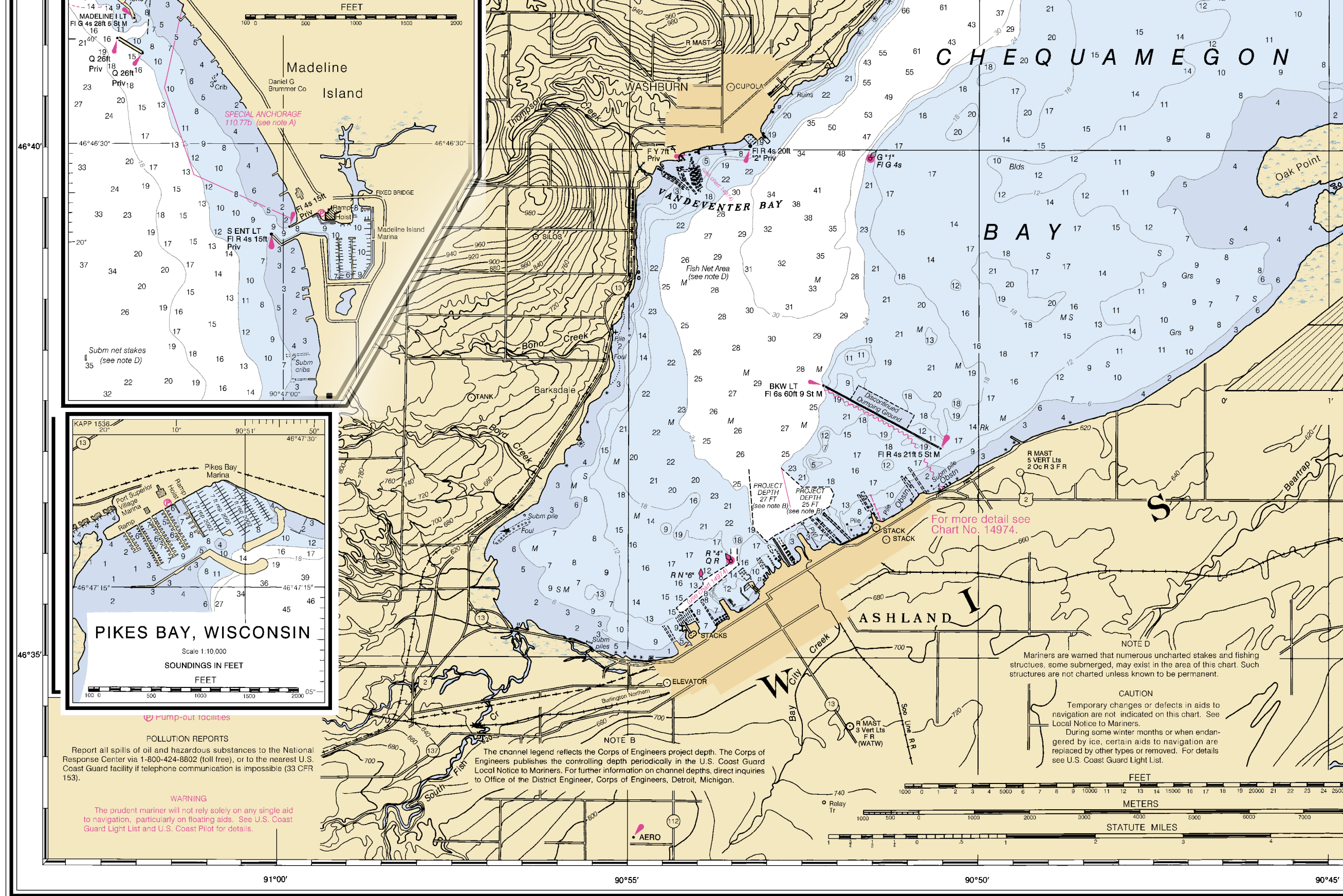
46°50'

46°45'



For more detail see Chart No. 14974.





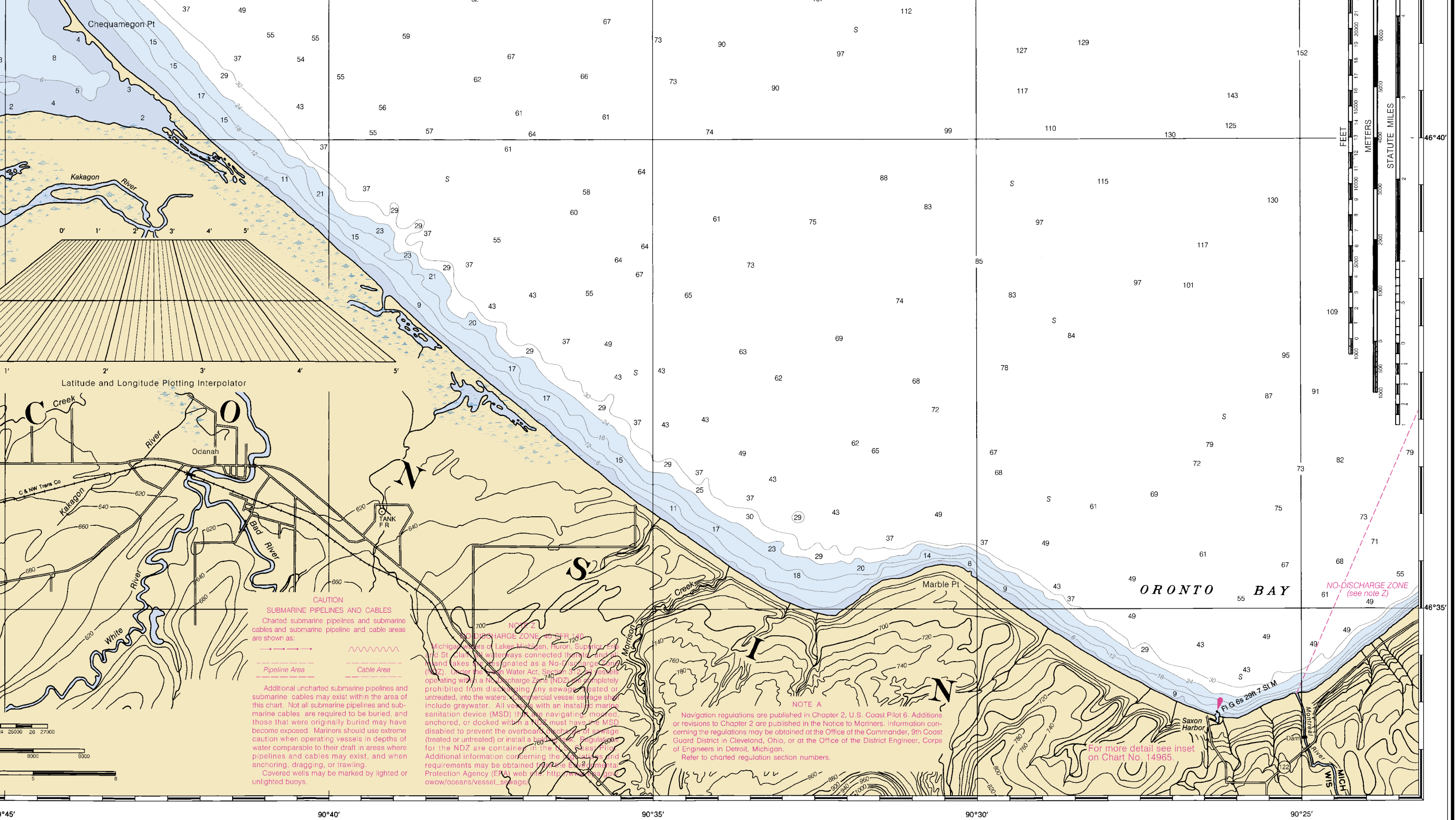
POLLUTION REPORTS
 Report all spills of oil and hazardous substances to the National Response Center via 1-800-424-8802 (toll free), or to the nearest U.S. Coast Guard facility if telephone communication is impossible (33 CFR 153).

WARNING
 The prudent mariner will not rely solely on any single aid to navigation, particularly on floating aids. See U.S. Coast Guard Light List and U.S. Coast Pilot for details.

NOTE B
 The channel legend reflects the Corps of Engineers project depth. The Corps of Engineers publishes the controlling depth periodically in the U.S. Coast Guard Local Notice to Mariners. For further information on channel depths, direct inquiries to Office of the District Engineer, Corps of Engineers, Detroit, Michigan.

NOTE D
 Mariners are warned that numerous uncharted stakes and fishing structures, some submerged, may exist in the area of this chart. Such structures are not charted unless known to be permanent.

CAUTION
 Temporary changes or defects in aids to navigation are not indicated on this chart. See Local Notice to Mariners.
 During some winter months or when endangered by ice, certain aids to navigation are replaced by other types or removed. For details see U.S. Coast Guard Light List.



FATHOMS	1	2	3	4	5	6	7	8	9	10	11	12	13	14	15	16	17
FEET	6	12	18	24	30	36	42	48	54	60	66	72	78	84	90	96	102
METERS	1	2	3	4	5	6	7	8	9	10	11	12	13	14	15	16	17